

2020 Model Year Standard Specification



Principal Dimensions

Length overall (incl. pulpit):
55'6" (16.92m)

Length overall (excl. pulpit):
53'6" (16.32m)

Beam (incl. gunwale):
14'10" (4.52m)

Berths:
4 - 6

Draught:
3'11" (1.20m) unloaded

Height above waterline
(incl. arch & nav. light mast):
15'1" (4.60m)

Transport height:
15'11" (4.87m)

Dry weight (approx.):
19.19 tonnes / 21.49 US tons (19,500kg)

Fuel capacity:
530 gallons / 637 US gallons
(2,412 litres)

Water capacity (incl. calorifier):
120 gallons / 145 US gallons
(550 litres)

**Engines
& Performance**

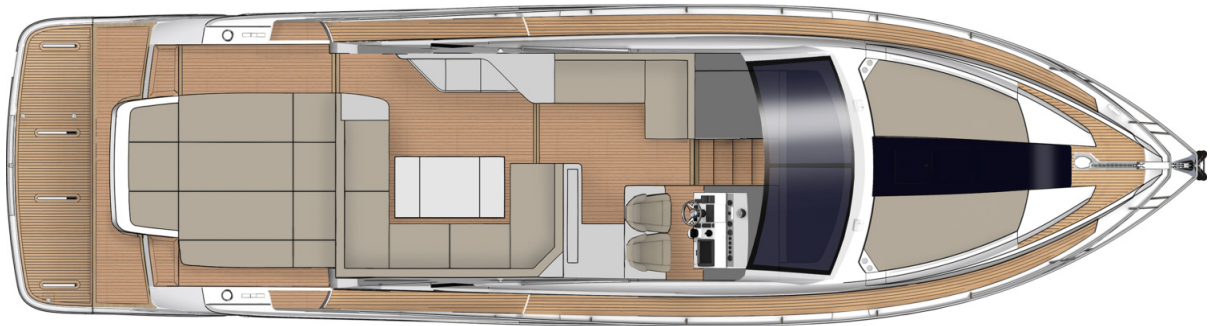
Twin Volvo Penta D11-725 shaft drive,
diesel (725mhp each):
32 knots

Type approval:
B

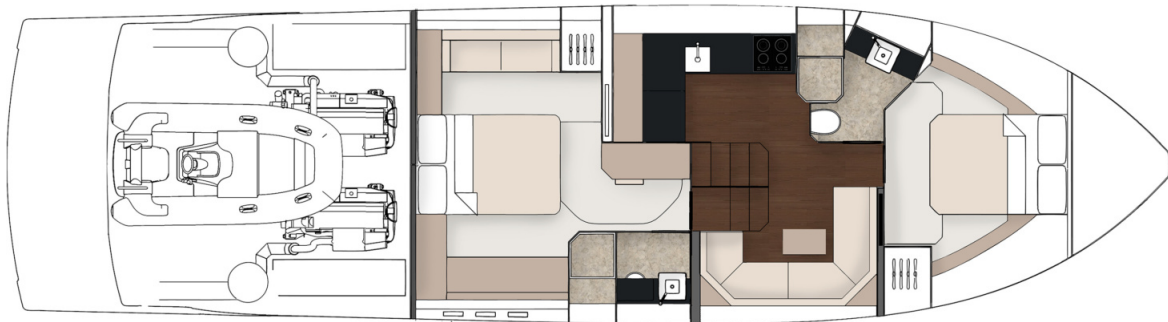
Max. persons capacity:
16

Deck Plans

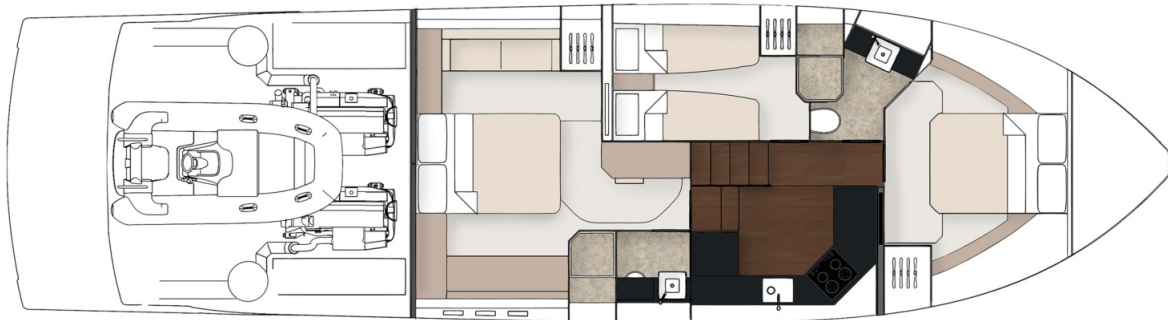
Main Deck



Lower Deck 2 Cabin



Lower Deck 3 Cabin



Deck

Anchor chain locker	Recessed self-draining area on foredeck for coach-roof cushions
Anchor winch (electric)	Remote control searchlight
Anchor winch controls	Riding light
Bathing platform ladder	Self-stowing Delta® anchor (25kg)
Calibrated anchor chain (50m / 27.3 fathoms)	Stainless steel aft fairleads
Ensign & staff	Stainless steel bow fairleads
Fender set	Stainless steel bow, cockpit, stern & twin spring cleats
Foredeck drinks holders	Stainless steel gunwale with rubber inserts
Foredeck glazing	Stainless steel pulpit
Foredeck stowage lockers	Teak laid bathing platform
Fuel fillers	Twin horns
Full set of IMCO navigation lights	Water filler
Garage access	Windscreen washers
Handrail	Windscreen wipers
Hot & cold water transom shower	
Moulded non-slip deck surface	

Helm Position

12V weatherproof socket with USB port	Garmin GMI 20 digital multi-function instrument system with colour display
Adjustable/tilt steering wheel	Garmin VHF 300i marine radio
Bilge pump switches with integral operating warning lights & audible alarms	High speed magnetic compass
Black mesh windscreen covers	Opening window
Bow thruster controls	Powered steering
Controls for engine bay fire extinguisher system	Red night-light illumination to helm
Drinks holders	Remote anchor winch controls
Electronic single-lever throttle & gear controls for port & starboard engines	Rudder position indicator
Fuel gauges	Searchlight controls
Full engine instrumentation including; tachometers, temperature gauges, audible alarms & engine hour meters	Settee opposite helm with table
Garmin GHP 20 autopilot system	Switches for navigation & riding lights, windscreen wipers & engine bay extractor fans
	Trim tab controls
	Twin helm seats

Electrical Systems

230 - 240V 50Hz

All 240V, 24V & 12V circuits (where applicable) protected by circuit breakers with main electrical load control panel

Onan® 9.5kW generator

Heavy duty circuit breakers

Isolating switches to all batteries

12 Volt

Voltage dropper from domestic batteries

24 Volt

Batteries - 2 x heavy duty batteries exclusively for port engine starting

Batteries - 2 x heavy duty batteries exclusively for starboard engine starting

Batteries - 4 x heavy duty batteries wired in parallel supplying domestic services & port engine starting

Circuit breaker for anchor winch

Emergency battery coupling system permits each engine to start from opposite battery bank

Regulated battery charger

240 Volt

Polarity check & earth leakage protection system

Power points throughout fed from shore power or generator

Regulated 80amp charger for domestic batteries

Shore power supply

Spare circuit breakers for optional equipment

Cockpit

12V heavy duty weatherproof socket

Access to side deck

Bathing platform lights

Boat hook

Deck level lighting

Drinks holders

Electric hardtop with pneumatic seal & overhead glazing

Engine bay access hatch with stainless steel gas struts

Fender stowage

Life raft stowage

Manual bilge pumps

Mooring warps

Mooring warp stowage

Sunpad (>2.8m wide) over garage

Teak laid floor throughout self-draining cockpit

Teak table with drinks holder

Transom gate

'U' shaped cockpit seating

Wet bar unit with refrigerator & sink

White vinyl cover

Interior Décor

Choice of interior finishes from the Amalfi, Capri, Hamptons or St Tropez interior styling ranges selected by the Fairline Yachts Design Studio

Hullform & Construction

Antifouling protection to hull
 Bow thruster
 Deep 'V' forward 12.5° deadrise aft
 Design, layout & detailing by the
 Fairline Yachts Design Studio
 Feature windows with opening
 portholes
 Full length moulded spray deflectors
 Hull/deck joint bolted & bonded

Integrally moulded engine bearers
 Isophthalic gel coat backed by
 isophthalic resin-rich powder-bound
 glass mat
 Resin infused cored hull & liner with
 hand-laid deck & components
 Polyurethane foam cores throughout
 deck for strength & thermal insulation

Saloon

FAIRLINE EDITION durable tumblers
 (set of 6)
 Folding table
 Overhead lighting

Random oak flooring
 Sofa with stowage
 TV with Fusion AV750 DVD/Radio &
 wireless connectivity

Galley

Avonite work surface
 Chopping board to sink infill
 Crockery stowage
 Extractor fan
 FAIRLINE EDITION melamine dinner
 service (24-piece, 6 place settings)
 Fire extinguisher
 First aid kit

Full height fridge/freezer
 Induction hob
 Integrated waste bin
 Microwave combi oven
 Overhead lighting
 Random oak floor
 Sink with hot & cold mixer tap
 Stowage cupboards & drawers

Lobby

Access to electrical control panel
 Access to master cabin, guest cabin/s,
 galley & day head
 Handrail

Lighting to stair risers
 Space for (optional) domestic
 appliance

Accommodation

Master Cabin

Aluminium venetian blinds	Overhead feature lighting
Double bed	Reading lights
Sideboard	Sofa
Feature windows with opening portholes	Vanity unit with stool
Mirror	Wardrobe

Master Cabin En Suite

Aluminium venetian blinds	Large hull window with single opening port hole
Avonite vanity unit locker & basin with hot & cold pressurised water	Mirror
Electric silent-flush freshwater toilet	Mirrored lockers
Extractor fan	Overhead lighting
Full set of bathroom fittings	Random oak floor
Full size shower with seat & hinged door	Shower tray automatic pump-out system

Forward Guest Cabin

Aluminium venetian blinds	Overhead lighting
Double bed with storage drawers	Reading lights
Escape hatch to foredeck	Wardrobe with mirrored doors
Feature windows with single opening porthole	

Forward Guest Cabin En Suite / Day Head

Aluminium venetian blinds	Mirror
Day access	Mirrored lockers
Electric silent-flush freshwater toilet	Overhead lighting
Extractor fan	Random oak floor
Full set of bathroom fittings	Shower tray automatic pump-out system
Full standing height shower with hinged door	Vanity unit & basin with hot & cold pressurised water

Port side Guest Cabin

Aluminium venetian blinds	Mirror
Bedside table	Overhead lighting
Feature windows with single opening porthole	Reading lights
Full length berths x 2	Wardrobe

Engines & Sterngear

Automatic bilge pumps for forward bilge, engine bay & rudder bay with manual 'on' override	Engine room soundproofing
Automatic engine bay fire extinguisher system	Exhaust overheat warning system
Dripless shaft seals	High capacity emergency manual bilge pump system with dedicated valves
Electric engine bay fans	Manganese bronze 'P' brackets
Electro-hydraulic trim tabs with cathodic protection	Manganese bronze propellers contra-rotating
Engine air intakes	Sea cocks on all inlets/outlets below waterline
Engine bay lights	Stainless steel alloy shafts

Fuel System

Emergency fuel shut-off valves accessible via cable-operated remote control	Individual fillers & vents to port & starboard
High capacity water separators & fuel filters	Twin fuel tanks with balance pipe

Freshwater System

Automatic, pressurised supply	Water tank
Calorifier hot water system	

Waste Water System

Holding tank (170 litres) with electric macerator pump-out

USA Specifications

In addition to or in lieu of those listed above

Voltage - 2 x 110V (220V) 60Hz

Whilst every effort is made to keep all sales literature up to date, it should not be regarded as an infallible statement of current specifications & does not constitute an offer for the sale of any particular boat. We continually seek to improve the specification & design of our boats, so alterations & upgrades to specifications take place continually.

Appointed dealers are not agents of Fairline Yachts Ltd & are not authorised to commit Fairline Yachts Ltd by any express or implied undertaking or representation.

Performance Figures: Power quoted in our literature for diesel inboard engines is crankshaft output.

Performance Estimates: Performance estimates are given in good faith, but are in no way guaranteed for any particular model. Dirt on the bottom of the boat, damage to the propellers, engine tuning, external water & air temperatures & the weight of crew, fuel & water carried can all adversely affect performance. For those & other reasons we can give no performance guarantees